

UpperGI Bleed Phantom

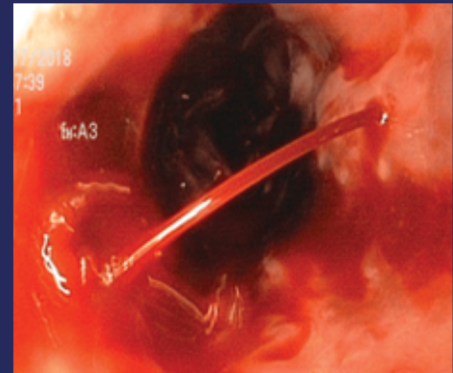
Train Like It's Real: The Future of GI Simulation

At Nordic Phantoms, we've developed an anatomical model, featuring realistic internal bleeding in the esophagus, stomach, and duodenum. Equipped with replaceable pathologies and realistic blood, it provides a lifelike experience for managing gastrointestinal bleeding - just like real patient scenarios.



As Real As It Gets

The UpperGI Bleed Phantom offers a highly realistic simulation experience. By replicating the complexities of real patient cases, it provides a lifelike experience that enhances skill development and builds confidence in managing critical scenarios.



Patient

Gain hands-on experience within

- ✦ Navigating the Upper Gastrointestinal Tract
- ✦ Hemoclip application
- ✦ Injection Therapy
- ✦ Banding Techniques
- ✦ Balloon tamponade
- ✦ Over-the-Scope Clip (OTSC) Application
- ✦ Stent placement



UpperGI Bleed Phantom

Discover Realistic GI Training

Click the video to see the UpperGI Bleed Phantom in action, simulating complex GI bleeding scenarios.

